

# 1982 CHRYSLER LeBARON

---











LeBARON MEDALLION FOUR-DOOR SHOWN IN TWO-TONE BLACK AND SILVER.





Some of the equipment shown or described throughout this catalog is available at extra cost.

LeBARON MEDALLION'S STANDARD CLOTH-AND-VINYL BENCH SEAT WITH FOLDING CENTER ARMREST IN SILVER.

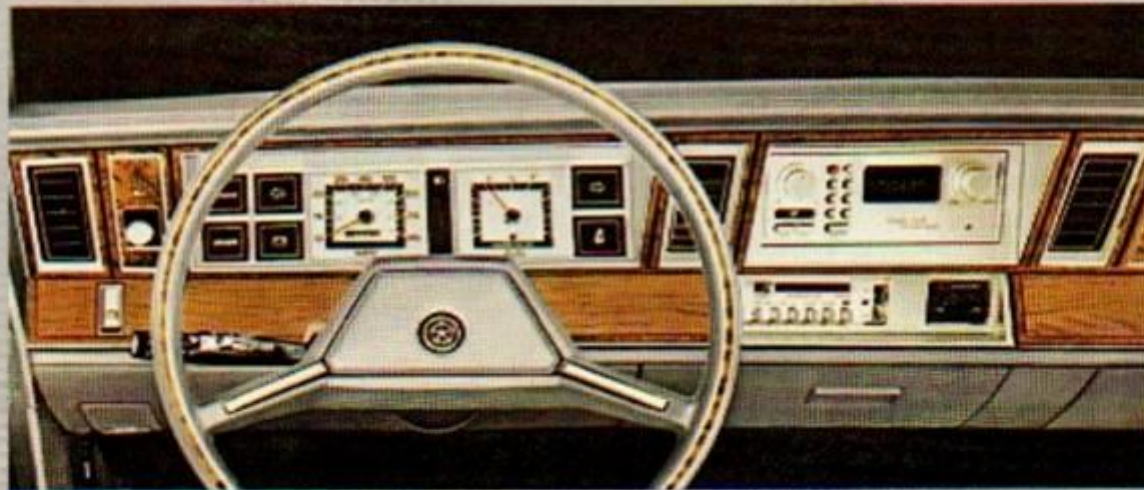


## 1982 CHRYSLER LeBARON SERIES

THEY'RE LIKE NO OTHER CARS FROM AMERICA, EUROPE, OR JAPAN. Take a good look at the first front-wheel drive cars ever bearing the Chrysler nameplate. This is a new generation of Chrysler automobile . . . using some of the most advanced automotive technology currently available.

These cars are quiet and comfortable inside; luxurious, and designed to have the highest level of quality ever found in a midsize Chrysler. LeBaron with the standard center armrest bench seat has room for six people, and is rated at **26** EPA EST MPG, 40 estimated highway.\* This is possible because Chrysler's 30 billion miles of front-wheel drive leadership have led to the development of aerodynamic, space and fuel-efficient automobiles that sacrifice little in the way of luxury car attributes. This new LeBaron, for all its trimness and agility, offers all that people have always wanted in a Chrysler including classic styling, traditional convenience and exemplary comfort. The 1982 Chrysler LeBaron Series. We've kept the best of the past and added the best in contemporary automotive engineering.

Take, for example, LeBaron's handsome, functional instrument panel design (below). It's easy to read the graphic displays and warning lights. The controls are easy to reach and use.



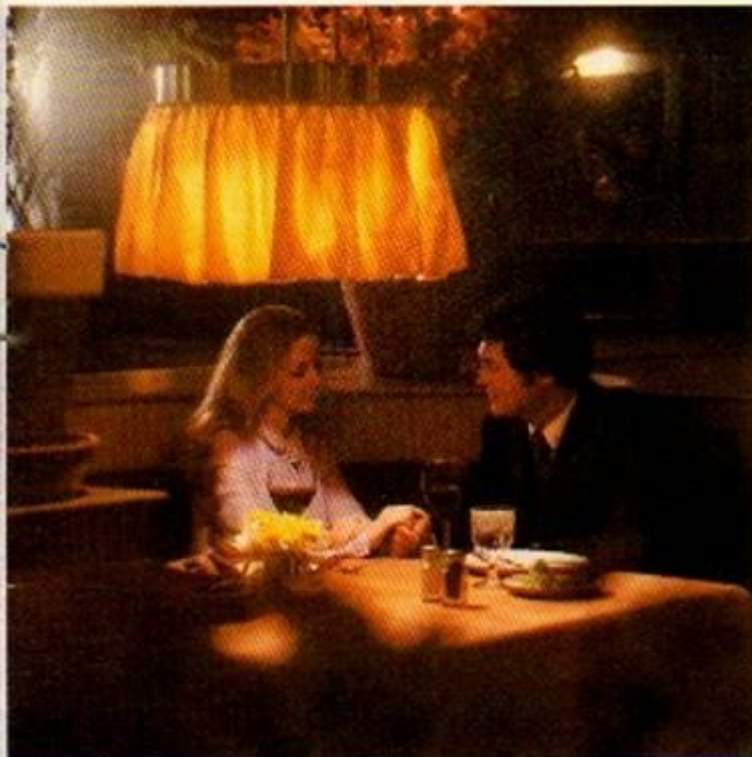
\*Use the EPA EST MPG number for comparison. Your mileage may differ depending upon speed, weather and road length. Actual highway mileage will probably be lower than highway estimate. California mileage: **26** EPA EST MPG, 36 estimated highway.





LeBARON FOUR-DOOR SHOWN IN STERLING SILVER.





## FEW CARS OFFER LeBARON'S COMBINATION OF HIGH MILEAGE, LUXURY AND ROOM FOR SIX.

The 1982 LeBaron is the new front-wheel drive midsize with traditional Chrysler prestige. It is efficient yet luxuriously trimmed inside and out. LeBaron's list of standard equipment is long, but it can be complemented with a wide range of options.

This year's LeBaron is available in two and four-door models in two price classes. There is the standard LeBaron four-door (shown here), the LeBaron Medallion four-door (shown on pages 3 and 4), and Medallion two-door (shown on pages 8 through 10). They feature the standard 2.2-liter Trans-4 engine, available with either the standard manual transaxle or optional automatic. A Silent Shaft 2.6-liter overhead cam four-cylinder engine built by Mitsubishi, with an automatic transaxle, is available as an option.

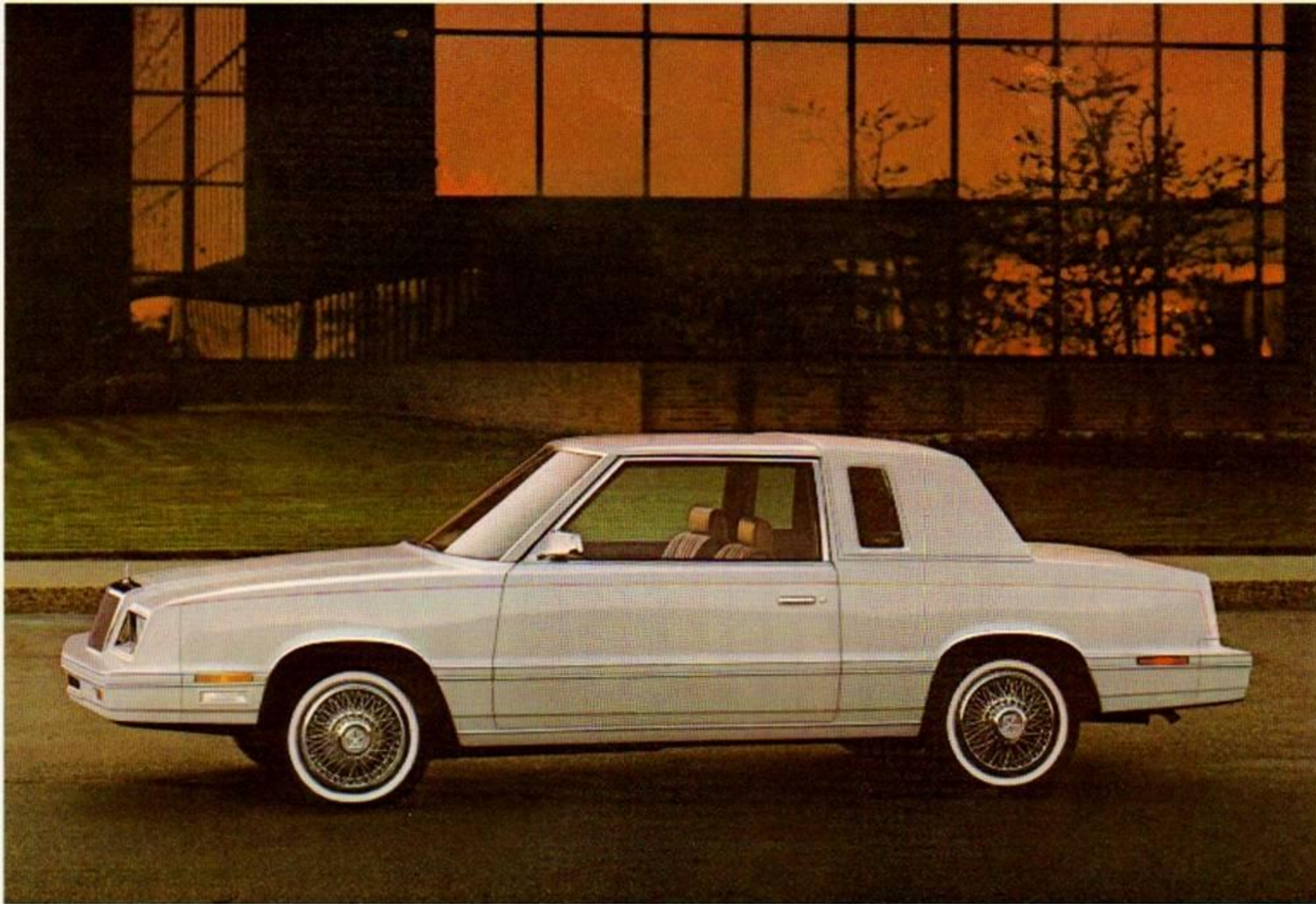
Among LeBaron's impressive standard features is a suspension system that produces a surprisingly luxurious ride for a car in the midsize class. These remarkable riding characteristics are achieved by a MacPherson-type Iso-Strut front suspension which includes coil springs around the shock absorbers and a linkless sway bar. To the rear, the ride is gentled by a flex arm beam axle with trailing links, coil springs and premium shock absorbers.

We think you'll be hard pressed to find a more handsome, efficient and luxurious way to transport six people—and over 15 cubic feet of luggage or cargo—than in a new front-wheel drive Chrysler LeBaron four-door.



LeBARON'S STANDARD CLOTH-AND-VINYL BENCH SEATING IN RED.





LeBARON MEDALLION TWO-DOOR SHOWN IN PEARL WHITE.





## LeBARON'S HIGH QUALITY IS EVIDENT IN EVERY DETAIL.

This LeBaron is an outstanding example of how a modern two-door midsize specialty car must deliver more than good looks and efficiency. LeBaron Medallion does. Like all LeBarons, it provides a road-smoothing suspension and superior acoustical sealing. A quiet ride is a better ride, and LeBaron's hush grows from new steel-belted radial tires with special low-rolling-resistance tread. Chrysler engineers paid special attention to eight areas in the suspension system. Their recommendations led to the extensive use of rubber bushings to isolate the passenger compartment from road shock, and the installation of premium rear shock absorbers, plus superb body acoustical insulation and sealing. You, of course, are the beneficiary. The benefits will become obvious only when you take a quiet, smooth ride in LeBaron... any new LeBaron.

This is the feel of solid design and exceptional workmanship. 1982 Chrysler LeBarons are among the most finely built cars in their class. Thanks to automated welders, computers, and people who care. In addition, randomly selected LeBaron two-door models are driven to Chrysler's new Quality Assurance Center. Here each selected car is thoroughly tested. Underbody and underhood components are inspected. Every electrical function is tested. Fits and finishes are examined. Thirty checks are made on the suspension system alone.

This LeBaron Medallion two-door will give you something else: a long list of standard luxury features as well as options that include the special Mark Cross leather-and-vinyl interior.



LeBARON'S OPTIONAL MARK CROSS SADDLE LEATHER AND VINYL MAHOGANY BUCKET SEAT INTERIOR.





LeBARON TWO-DOOR SHOWN IN MAHOGANY.

LeBARON TWO-DOOR MEDALLION CONVERTIBLE SHOWN IN MAHOGANY...available in spring of 1982.





LeBARON... BACKED BY A LIMITED ONE-YEAR/12,000-MILE WARRANTY WITH ADDITIONAL LIMITED TWO-YEAR/24,000-MILE POWER TRAIN COVERAGE.

Because LeBaron is built to such high standards of quality, it offers more than the luxury of options such as the sun roof shown on the left, and standard features like the interior shown below. It also offers the luxury of a limited one-year/12,000-mile warranty with additional limited two-year/24,000-mile power train coverage. (See your dealer for complete details.)

Take, for instance, the LeBaron two-door shown on the opposite page. It shares the midsize specialty classification with many other cars, but you'll find it to be in a class by itself.

There is quiet luxury here, thanks to LeBaron's special sound insulation. Remember that LeBaron is the first front-wheel drive Chrysler to bring together midsize fuel-efficiency and luxury and upscale comfort. In keeping with Chrysler's standards of luxury and driving comfort, the 1982 LeBaron is a quieter and smooth riding midsize luxury car.



LeBARON'S OPTIONAL ALL-VINYL BUCKET SEAT INTERIOR IN MAHOGANY. (SHOWN WITH OPTIONAL SPORT STEERING WHEEL.)



# AT CHRYSLER, QUALITY IS A SCIENCE



More than ever before, the Chrysler Corporation is committed to quality in every car it builds. There's no room for second-best in the design and assembly of the fine cars described here.

Chrysler Corporation quality is quality that is designed-in right from the start with the aid of computers. Only the highest quality components are used throughout, components that are checked when they arrive from suppliers to make sure that only the best goes into every new car we build.

Galvanized sheet metal or zincrometal panels are used extensively along with pre-coated steel in critical areas for corrosion resistance. To further protect against corrosion, each vehicle goes through a seven-step dip-and-spray process that helps lock out rust.

In addition, cars are checked and rechecked through every stage of assembly to make sure parts fit properly . . . and work properly.

Take our all-new LeBaron, for example. Every one is checked by test equipment from Chrysler's Huntsville Electronics Division to insure that all electrical functions are operating properly.

Furthermore, at our extensively modernized St. Louis assembly plant, selected LeBaron two-door models are subject to a special Quality Assurance Program designed to insure uniform production and quality standards. One out of every three vehicles is given a three-mile road test to verify riding comfort and quiet. After a car passes this test, it is driven to the Quality Assurance Center where it undergoes a complete inspection for fit, finish and overall appearance.

If a car does not meet the grade, it's not released for shipment. So you can be sure that only the finest cars the Chrysler Corporation knows how to make reach you, the buyer.

As you can see, quality is more than a commitment at the Chrysler Corporation. To make certain that the highest quality standards are achieved and maintained, quality has to become a science. At Chrysler, it already is.





## 1982 LeBARON OPTIONS

Pictured here are just a few of the many options available at extra cost on the 1982 LeBaron. One or more of them can only add to your driving pleasure and could mean extra value for you at resale time.

1. **Air Conditioning.** Create your own comfort zone with air conditioning.
2. **Tilt Steering Column.** Allows you the perfect angle for extended driving or a change of pace.
3. **2.6-Liter Engine.** The Mitsubishi four-cylinder engine, a unique Silent Shaft design for smooth, quiet engine operation. And the added performance level you may desire for such activities as light-duty trailer towing (up to 1,500 pounds with a frontal area of less than 30 square feet).
4. **Power Door Locks/Window Controls.** No more reaching or twisting. Comfort comes first when you have total control of all doors and windows.
5. **Electronically Tuned Radio with Stereo Cassette Tape Player.** Solid state tuning provides frequency selection with the accuracy and stability of a quartz crystal. With ETR there is no drift, fading, distortion or mistuning.
6. **Speed Control.** Pick a speed, press the control button, and the engine will maintain that relative speed until you touch the brakes or return it to manual control.
7. **Luxury Two-Spoke Leather-Wrapped Steering Wheel.** Luxury you can get your hands on. Leather for comfort and sure grip.
8. **Wheel Covers and Wheels.** From left to right: deluxe wheel cover (std. LeBaron), premium color-keyed wheel cover (std. Medallion, not available LeBaron), wire wheel cover, and cast aluminum road wheel.

